



The Rockhounder

August 2021

The purpose of the Gem, Lapidary, and Mineral Society of Montgomery County MD, Inc. is “to increase knowledge and popular interest in earth sciences, geology, mineralogy, paleontology, lapidary arts, and related subjects.”

NOTE: Please send any submissions for the September issue of The Rockhounder to Editor Olivia Luzier at editor@glmsmc.com by Monday, August 30th, 2021.

Regular Meeting Announcements

Ken Reynolds, Vice President

August Speaker Information:

Topic of Talk: Wavellite

Speaker: Bill Stephens

Our speaker this month is Bill Stephens. He is President of the Stephens Environmental Consulting, Inc., and is a fluorescent mineral enthusiast.

Follow us on Facebook at

[https://www.facebook.com/
groups/984241208329511/](https://www.facebook.com/groups/984241208329511/)

Next Regular Meeting:

Date: August 9th, 2021

Time: 7:30 PM

Place: Virtual (online Zoom meeting)

Next Board of Directors Meeting:

Date: August 23rd, 2021

Time: 8 PM

Place: Virtual (online Zoom meeting)

Inside this issue:

Item	Page
Meeting Announcements, Speaker Info	1
President's Message	2
Regular Meeting Report	3
BOD Meeting Minutes	4
FRA Meeting Minutes	6
Beryl: Variety Emerald	7
GLSMC Auction and Potluck Picnic	8
Update on Visiting the Smithsonian	9
Field Trip Announcement, Article of Interest	10



President's Message

Holly Heighes

By now you should have received your invitation to our **club picnic/auction** scheduled for **September 12th**. If you have not yet RSVP'd, please do so, as we will need a count for planning and purchasing purposes. And if you missed the invitation, a copy is included within this Rockhounder.

Our **August 9th program** will be Bill Stephens speaking about Wavellite. For the show table, suggestions are Wavellite, other green minerals, or really, anything you want. As with our July presentation, this will not be considered an official meeting, though anyone is welcome to make announcements for the benefit of the group.

HELP WANTED: We are looking for volunteers for the 2022 Board of Directors– most specifically for Secretary and VP. We especially would like to encourage people who have never served on the Board to give it a try. The Board works well together and we all help each other out; you would not be expected to perform any role without ample support. Please feel free to reach out to me, Chris, or Ken if you are even considering it.

Hope to see you Zooming on August 9th and in person September 12th!

Holly



See picnic/auction location above. Restrooms are available. It is suggested that folks bring chairs, as many of the tables will likely be used for the auction.



GLMSMC Regular Meeting Report from July 12th, 2021

Jeff Cessna, Secretary

The June 14, 2021 meeting was opened by President Holly Heighes at 7:45 PM. There were approximately 27 people in attendance. The meeting was conducted online. No business meeting was held, as this was a program-only meeting.

President Holly Heighes welcomed attendees. She gave details of the upcoming club picnic and potluck. She noted the July 19th Board of Directors meeting, stating that any member was welcome to attend.

Vice President Ken Reynolds announced an upcoming Mill Site material dig at the Franklin Mineral Museum and an upcoming swap and sale at the pond in Franklin, NJ.

Ken introduced our speaker for the evening, former club President Scott Braley. The talk was entitled *Herkimer Diamonds*. Scott discussed the locations in New York where one can find the doubly terminated clear quartz crystals known as Herkimer Diamonds. He noted that this type of crystal is available elsewhere, including the variety with fluorescent inclusion from Pakistan. He stated it was the quality, size, and access that made Herkimer Diamonds famous. He reviewed the local geological history that lead to the formations and described some associated minerals, such as dolomite and pyrite. He described his experiences collecting from pockets at two sites.

Keep an eye out for dolomite that others discard. Also keep any specimens on matrix, as these are not common. Clusters can be reassembled without fakery as 3D jigsaw puzzles. With Scott's interest in photography of inclusions, we were treated to photos and videos of the many forms from moving bubbles to feathers of anthraxolite to combinations of both. Thanks, Scott.

Show Table: In honor of our presentation, a suggestion for the show table was to show your quartz specimens. Those with items to present were asked to provide the information in the chat to facilitate inclusion in the minutes.

- Chris Luzier showed a softball-sized Herkimer Diamond with a bubble inclusion. The specimen was acquired for a good price along with several golf ball sized-crystals at a show in Franklin.
- Jonathan Harris showed a Herkimer Diamond specimen on matrix and a dolomite specimen, both self-collected at Ace of Diamonds, Middleville, NY. He recommended sawing to trim the matrix, as hammers and trimmers can damage crystals.
- Doug Baum showed his favorite Herkimer from Paradise Falls, Middleville, NY. He learned in the presentation that his inclusion was likely pyrite.
- Pat Repik-Byrne showed a matrix specimen with pockets on all sides and quartz crystals. It was purchased in a Pennsylvania rock shop, but likely a Herkimer specimen.

Continued on page 4



GLMSMC Regular Meeting Minutes from June 14th, 2021

Jeff Cessna, Secretary

Continued from page 3

- Dee Weiss showed a quartz on matrix specimen with additional pockets coated in anthraxolite.
- Gary and Diane Leaman showed Herkimer diamonds self-collected at Ace of Diamonds. Diane noted the clarity of the crystals.
- Steve showed a Herkimer Diamond specimen acquired by trading an apophyllite specimen.
- Jeff Cessna showed two hematite included quartz specimens and one amethyst, from Thunder Bay, Ontario, Canada.
- Holly Heighes showed a Herkimer Diamond from Herkimer, NY, acquired as a gift from Dr. Jeff Post and originating from the Wendell Mohr collection.
- Andy Dietz showed a large, 15 lb. quartz crystal from the Mc Earl Mine, Blue Springs, Arkansas.
- Scott Braley showed an approximately 40 lb. head-sized quartz crystal from Maine. The crystal showed evidence that it had detached and fallen within a pocket, but continued to form cathedral quartz on the back.

The meeting ended at 9:00 PM.

GLMSMC Board of Directors Meeting Minutes from July 19th, 2021

Jeff Cessna, Secretary

Board Members Present: Doug Baum, Germaine Broussard, Andy Celmer, Jeff Cessna, Jonathan Harris, Holly Heighes, Chris Luzier, Ken Reynolds, Joel Rosen, and Dave Tiktinsky. **Guests Present:** Dan Kohn, Gary Leaman, Diane Leaman, Karen Lottes.

President Holly Heighes called the July 19th meeting to order at 8:00 PM.

Picnic: Expenses for the picnic were reconsidered based on a prior motion not including a dollar amount. It was M/S/P that the club supplement the club potluck lunch with food from Mission BBQ (or alternative if unavailable) and supplies; the total cost not to exceed \$1,000. The amount will depend on the number of attendees. Jonathan Harris will make the reservation soon and finalize the order 3 days before the picnic when the number of attendees is known. Supplies will include sodas

Continued on page 5



GLMSMC BOD Meeting Minutes from July 19th, 2021

Jeff Cessna, secretary

Continued from page 5

and ice. It was M/S/P to repeal the related motion from the prior meeting. Meeting times and locations for set-up were discussed. Someone will send Joel an email with details.

Treasurer: Jonathan supplied the current club financials statements. He stated there was nothing dramatic and the club was solvent. A refund of a show related overpayment was received.

Vice President: Ken discussed upcoming meeting presentations. The possibility of putting on a hybrid meeting in September was discussed.

Membership: Doug announced that paid memberships stood at 107 at the end of June. Additional outreach will occur for those who have not yet renewed. Doug will supply information to Holly by the end of July. It was M/S/P to waive the \$5 fee for late renewal for this year. Paid new members who have not been voted upon in a business meeting will be considered members for the picnic and will be voted on at the September meeting.

Property: Tucson Posters from the Mohr collection will be used as supplemental door prizes at upcoming meetings.

Club Outreach: Chris Luzier reported plans for Jonathan, Dave, and himself to visit the Rockville Science Center to continue identification of minerals from the Chuck Hyland collection. The center has reopened. The staff has expressed an interest in joint programs with the club.

Show: Chris Luzier reported that previously made pre-forms are in suitable condition. There are a suitable number and the percentage of those not sticking to the dop wax is as normally expected. Volunteers are needed to reattach failed pre-forms. The club will also test a new silicon attachment method for pre-forms.

Field Trips: Germaine Broussard reported on the field trip to Mount Pleasant Mills. She is investigating collecting locations that are suitable for families.

Meetings: A Board of Directors meeting will be needed in August to finalize picnic planning.

It was M/S/P to adjourn the meeting at 9:01 PM.



Future Rockhounds of America (The MOCKS) Ages 10-15

Mark Dahlman

Next Meeting Date: Time will tell

Meeting Time: 7:45-9:00 PM when we're back in action

Meeting Location: Sunroom Cafeteria at the Rockville Senior Center

Big news, FRA members! You get to participate in a kids-only auction and you don't even have to use your money!! On Sunday, September 12, from noon to 5, our club will have an auction and potluck at Griffith Park Pavilion in Gaithersburg (29 South Summit Avenue). From 1 to 2 PM, there will be a kids-only auction using play money.

The specimens being auctioned are from Wendell Mohr's collection. Mr. and Mrs. Mohr were long-time members of our club. Their children have donated Mr. Mohr's excellent collection to our club. This is a great opportunity for you to add to your collections.

One of the activities for the Fossils badge is to build a collection of at least 10 fossils that you label (and hopefully enter in your catalog). There are many activities for the World in Miniature involving building collections of at least 10 micro-, thumbnail-, and miniature-sized specimens. Any of these activities will also satisfy the Collecting badge activity to build a collection. This auction will be a good chance to select pieces that fit in your collection.

It is important for everyone planning to attend the auction and potluck to email our club President. Email hollyheighes@gmail.com by August 21st to let her know how many people in your family will attend and what potluck dish you will bring. It would be a good idea to also bring your own folding chairs.

I hope you all can make it to this special event!

For more information on the Future Rockhounds of America program, please contact Mark Dahlman at [<fra_advisor@glmsmc.com>](mailto:fra_advisor@glmsmc.com) or 301-428-0455.



Beryl: Variety Emerald

Don Peck

This article is courtesy of Dan Kohn and comes from the "Mineral Of The Month" by Don Peck, life member of the New Jersey Mineralogical Society.



The Hooker Emerald held by the Smithsonian Institution From Wikipedia

The mineral is beryl and is recognized as such by the IMA (International Mineralogical Association). Emerald is a varietal name, recognized by gemologists. Originally, emeralds were deep green beryls where the color was due to chromium. More recently, the definition has been stretched to include vanadium as well as chromium.

The color of emeralds ranges from light green, to a deep rich green, to blueish green, to almost black. It is relatively hard (as are all good gem stones) with a Mohs hardness of $7\frac{1}{2}$ to 8. The refractive indices are 1.565 to 1.602 and it has a strong yellow green—blue green dichroism. Specific gravity is 2.67 to 2.78. Natural emeralds almost always have mineral inclusions (somewhat diagnostic of the source), thin liquid films or tubes, and healed fractures.

Emeralds with fracture flaws are often treated with oils or polymers to hide the "feathers". In the U.S. the Federal Trade Commission requires that such treatment be disclosed when the gem is sold.

The largest emerald found is the Mogul Emerald at 217.8 carats. It is reported to be in a private collection. The Hooker Emerald (75.47 carats) and the Chalk Emerald (37.8 carats) are held by the Smithsonian Institution.

In this country, leading localities for emeralds are Topsham, Maine and at half a dozen mines in western North Carolina. They have been found also in Connecticut, Montana, Nevada, and South Carolina. Worldwide, the finest emeralds are mined in Muzo, Columbia, which is the world's largest producer. Zambia ranks second in production. Other nations from which emeralds have been reported include Afghanistan, Australia, Austria, Brazil, Bulgaria, Cambodia, Canada, China, Egypt, Ethiopia, France, Germany, Italy, Kazakhtan, Madagascar, Mozambique, Namibia, Nigeria, Norway, Pakistan, Russia, Somalia, South Africa, Spain, Switzerland, Tanzania, and Zimbabwe.



GLMSMC Auction and Potluck Picnic

GLMSMC AUCTION & POTLUCK PICNIC

Club members and their household only

Please bring a side dish or dessert
The club will supply a main course

WENDELL MOHR COLLECTION TO CLUB MEMBERS
VIA SILENT & LIVE AUCTION
YOUTH ONLY AUCTION WILL BE WITH PLAY MONEY

SUNDAY, SEPTEMBER 12TH 2021 12-5

Griffith Park Pavilion, 29 South Summit Ave. Gaithersburg

RSVP to: hollyheighes@gmail.com by August 21, 2021

Please indicate the # of people coming from your household
& what you plan to bring for potluck.
We recommend that you bring a chair(s)



Update on Visiting the Smithsonian Natural History Museum

Holly Heighes

Update on Visiting the Smithsonian Natural History Museum as of 7/30 (taken from website):
<https://naturalhistory.si.edu/visit>

When is the museum open?

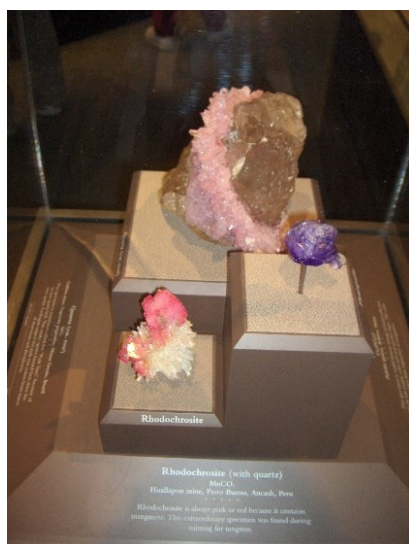
The National Museum of Natural History is closed on Monday and Tuesday and open Wednesday through Sunday from 10 AM to 5:30 PM, except December 25.

Are masks still required?

Face coverings are required for visitors two and older who are not fully vaccinated for COVID-19. Fully vaccinated individuals do not need to wear face coverings during their visit.

Are passes necessary to enter the museum?

No, free timed-entry passes are no longer needed to enter the museum.





Field Trip Announcement

Sam Linton

Dig...!

Penn/MD Quarry (H&K): October 2nd, 2021 from 8 AM to 12 PM (arrive by 7:45 AM) at 303 Quarry Rd, Peach Bottom, P.A., 17563. Strict limit of 25, so no other clubs. Children 10 and older welcome, but must be watched closely by guardian (1 per child). RSVP to cooldragonshirts@yahoo.com (Sam) between September 27-29th, because the dig is a long way off and your plans may change.

REQUIRED: Hard hat, eye protection, gloves, and steel toed boots. Last time Jay wanted us to keep one foot on the ground, so that means no climbing on the berms. If you are caught touching a high-wall, you will be immediately thrown out. As with every quarry, there will be situations that require you to use common sense. If you question a situation, ask the trip lead (Sam) or the company rep.

The most common minerals to be found are quartz (usually crypto, but up to 1/4" ... prase too), serpentine (antigorite), brucite (usually thin sheets), chromite, magnesite (hydro- too), and deweylite.

Article of Interest

Thanks to Phillip Krug for notifying us of this story: <https://www.bbc.com/news/world-asia-57981046>



BOARD OF DIRECTORS

President – Holly Heighes

Vice President – Ken Reynolds

Secretary – Jeff Cessna

Treasurer – Jonathan Harris

Field Trip Chairman – Germaine Broussard

Membership Chairman – Doug Baum

Downstairs Showchair – Chris Luzier

Upstairs Showchair – Dave Tiktinsky

Property Manager – Joel Rosen

Immediate Past President – Jonathan Harris

EFMLS Liaison – Andy Celmer

Bulletin Editor– Olivia Luzier

Life Members: Larry Harrison, Wendell Mohr, Juan Proaño, and George Durland

Society Address: Gem, Lapidary, and Mineral Society of Montgomery County MD., Inc.

P. O. Box 444, Gaithersburg MD 20884-0444

Website: <http://www.glmsmc.com/>

All Society correspondence is to be sent to this address except that which is intended for The Rockhounder and its editor. Such items are to be sent to the editor's email address at editor@glmsmc.com.

Permission to copy material
printed herein, except
specifically copyrighted items,
is granted, provided credit is
given.

Award Winning Bulletin

EFMLS, AFMS



**TIME SENSITIVE
DATED MATERIAL
FIRST CLASS MAIL**

**The Rockhounder
Gem, Lapidary, and Mineral Society
of Montgomery County, MD, Inc.
P. O. Box 444, Gaithersburg MD
20884-0444**